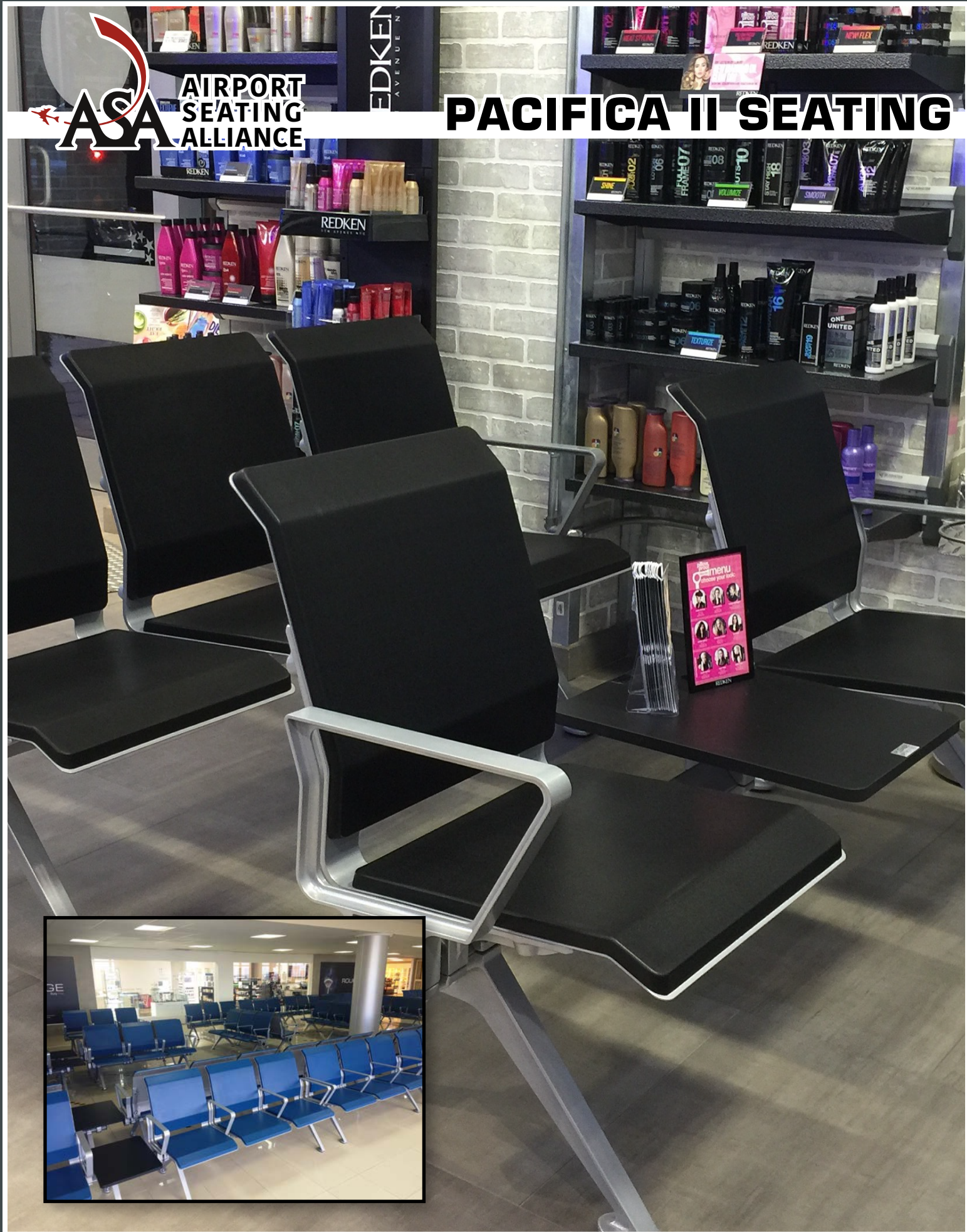




**AIRPORT
SEATING
ALLIANCE**

PACIFICA II SEATING



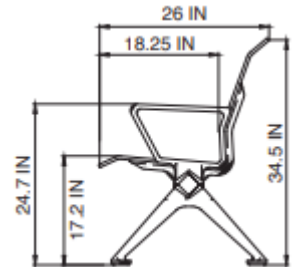
Specifications PACIFICA II SEATING

- Seat / Back:** 2.5mm pan, cold-rolled steel, standard color is metallic silver
- Cushion:** 25mm self-skinning molded polyurethane (PU) cushions, standard color is black
- Arms:** Die-cast aluminum, loop, standard finish is metallic silver
- Legs:** Die-cast aluminum, non skid glide, standard finish is metallic silver
- Beam:** Cold-rolled steel, diamond shape, standard length is all arms and color is metallic silver
- Finish:** Electro-static powder coating, standard color is metallic silver
- Frame:** Die-cast aluminum brackets, standard finish is metallic silver
- Table:** High pressure laminate, standard color is black
- Configurations:** Available in 2, 3, 4, and 5-seat units, back-to-back, end-to-end, and cluster
- Options:** All, end, or no arms, metal color options, PU colors (MOQ), power changing, PU color options (MOQ 200 seats), tables, floor mounting

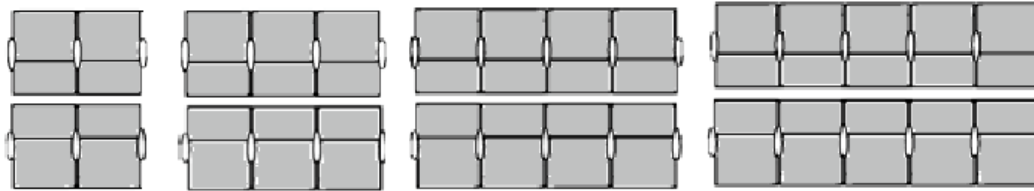
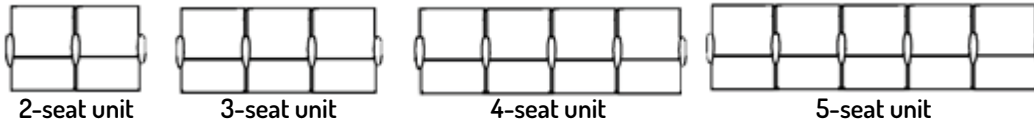
RECYCLABLE



METAL

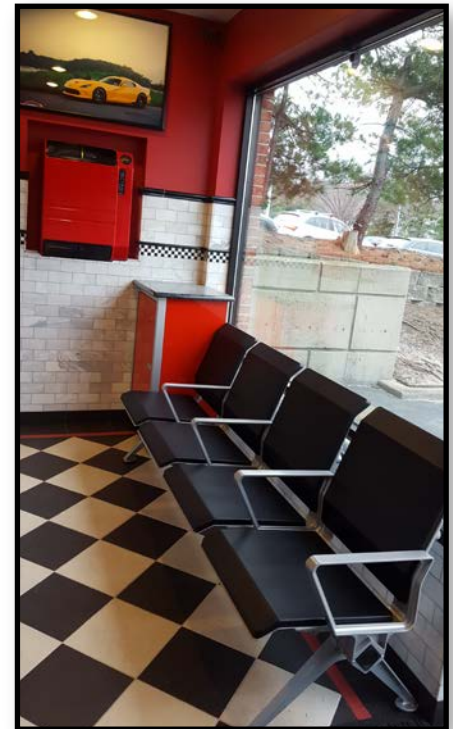


Standard Profile



Back-to-back Configurations

Inches	No Arms	End Arms	All Arms
2-seat unit	39.00	43.00	45.00
3-seat unit	58.75	62.75	66.75
4-seat unit	78.50	82.50	88.50
5-seat unit	98.25	102.25	110.25



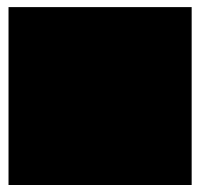
Metallic Silver
Smooth



Gray
Textured



Charcoal
Textured



Black
Smooth



For assistance with power options and layouts contact:
 Tel: +1-901-685-8263 | Fax: +1-901-683-6745
 Toll Free: +1-800-810-4231
 e-mail: sales@airportseatingalliance.com
www.AirportSeatingAlliance.com